



**STORMTECH**  
CLADDING

**Architectural Metal  
Cladding Specialists**

[www.stormtech.melbourne](http://www.stormtech.melbourne)

1800 787 247

[estimating@stormtech.melbourne](mailto:estimating@stormtech.melbourne)

# The Team at **STORMTECH**

work with many  
systems and  
materials for all kinds  
of projects

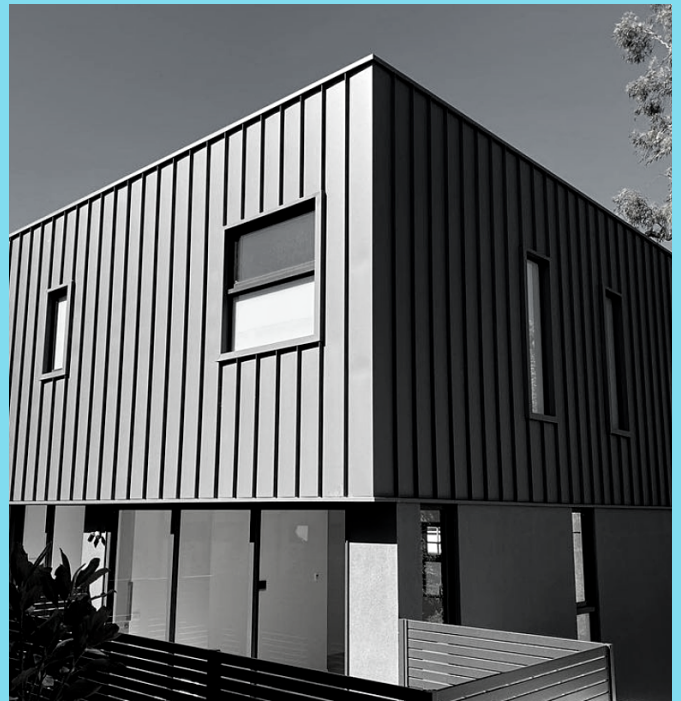
## **MATERIALS**

- Colorbond Steel
- GreenCoat
- VMZINC
- Vestis
- and more

## **SYSTEMS**

- Standing Seam
- Interlocking Panel
- Nail Strip
- Snap lock

**RESIDENTIAL**  
**COMMERCIAL**  
**INDUSTRIAL**





# STANDING SEAM



Standing Seam is one of the most versatile and popular cladding systems as it adapts well to complex designs to achieve clean and structured lines.

Continuous flowing thick bands neatly framed by thin ribs

Available in a range of pan widths and lengths of up to 8 metres, the Standing Seam panel cladding system will meet your building construction requirements

Profile



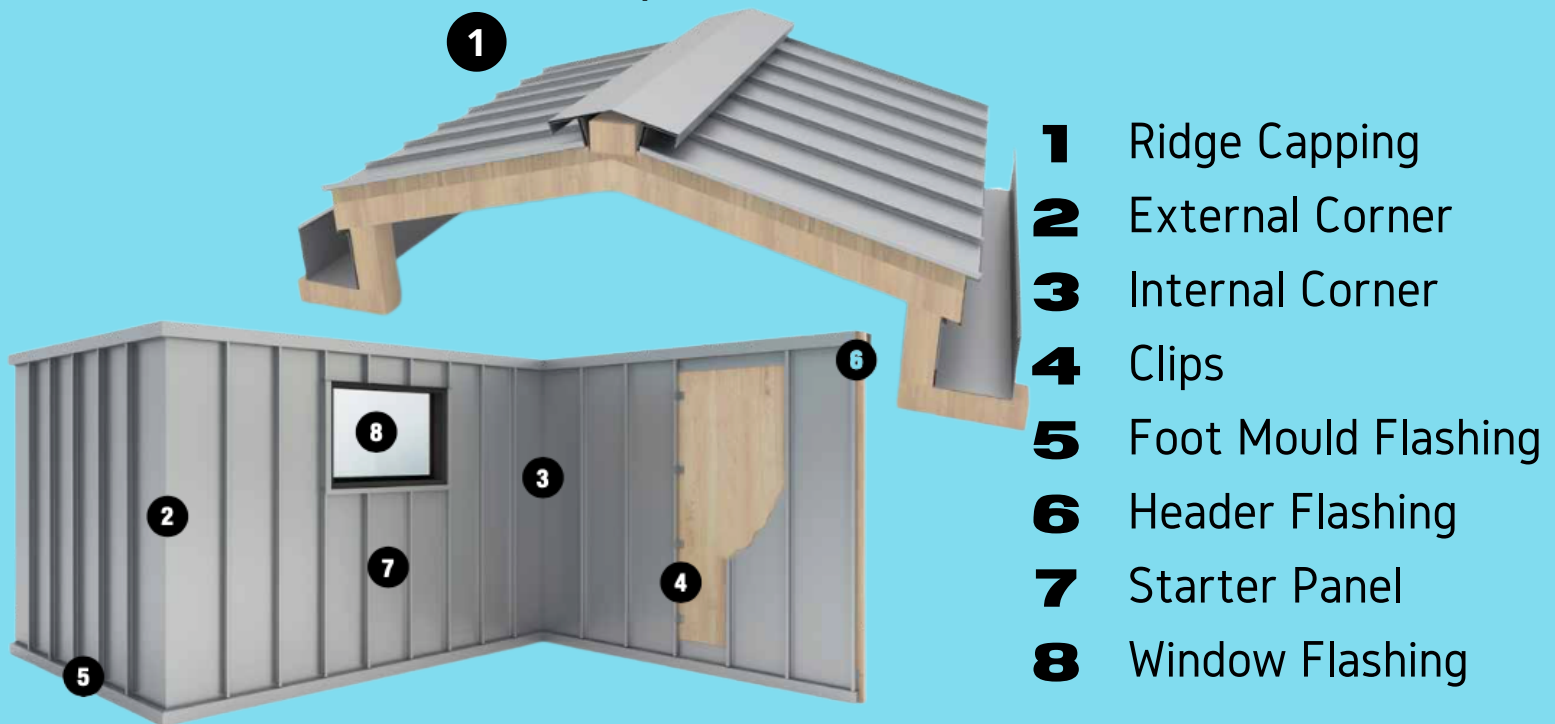
Rib Height	25mm or 38mm
Maximum Length	500mm - 8000mm
Pan Width 25mm	180mm - 530mm
Pan Width 38mm	180mm - 505mm

# STANDING SEAM



Standing Seam cladding system allows the flexibility of the custom design panels to suit the required application for a superior finish.

This includes panel designs that meet the internal and external corners, the windows, the doors, or other unique designs for your specifications.



- 1** Ridge Capping
- 2** External Corner
- 3** Internal Corner
- 4** Clips
- 5** Foot Mould Flashing
- 6** Header Flashing
- 7** Starter Panel
- 8** Window Flashing

## INSTALLATION PROCESS

The standing seam panel system works by using concealed clips to secure the panel to the sub-structure which is then overlapped with an adjacent panel. These panels are then crimped together using specialised tools to create a strong sealed weather-tight joint. This profile can be installed vertically, horizontally, or diagonally. Fixing clip hooks onto underlap of the male edge and is fastened to the substrate prior to joining the adjacent female edge. Standing Seam installation requires skill and attention to detail and unique seaming tool.



# INTERLOCKING PANEL



The Interlocking Panel profile has an adjustable width flat panel with a shadow- line gap, a perfect option for building structures with complex designs.

Available in a range of pan widths and lengths of up to 8 metres, the Standing Seam panel cladding system will meet your building construction requirements.

Concealed fix profile ideal for contemporary architectural facades.

Profile

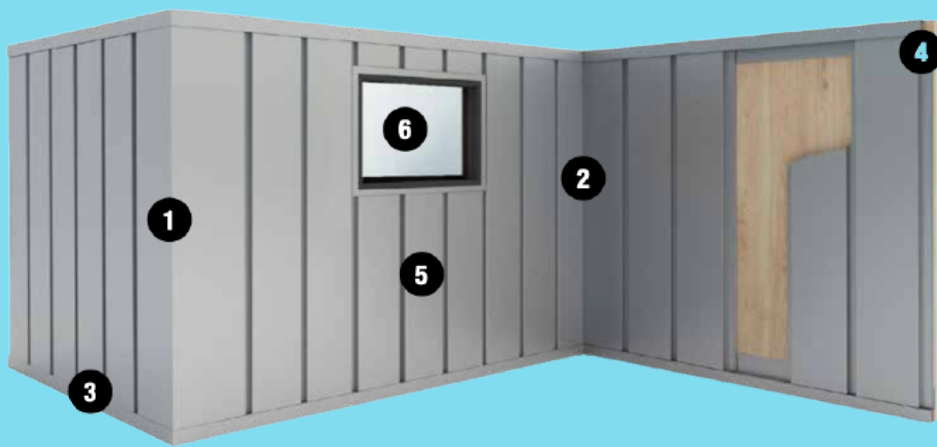


Rib Height	25mm
Maximum Length	500mm - 8000mm
Pan Width 25mm	180mm - 580mm
Express Width	15mm

# INTERLOCKING PANEL



The Interlocking Panel cladding system allows the flexibility to custom design panels to suit the required application for a superior finish. This includes panel designs to satisfy both the interior and exterior corners, the windows, and the doors or other unique designs to perfectly meet your specification



- 1** External Corner
- 2** Internal Corner
- 3** Foot Mould Flashing
- 4** Header Flashing
- 5** Starter Panel
- 6** Window Flashing

## INSTALLATION PROCESS

Panels can be installed horizontally, vertically, or diagonally in order to create an ultramodern, streamlined aesthetic.

Panel width, as well as the express joints, can be customised to suit your project needs.

The Interlocking Panel system works by using concealed fasteners to secure the panel to the sub-structure and then the insertion of an adjacent panel into the fixed panel.

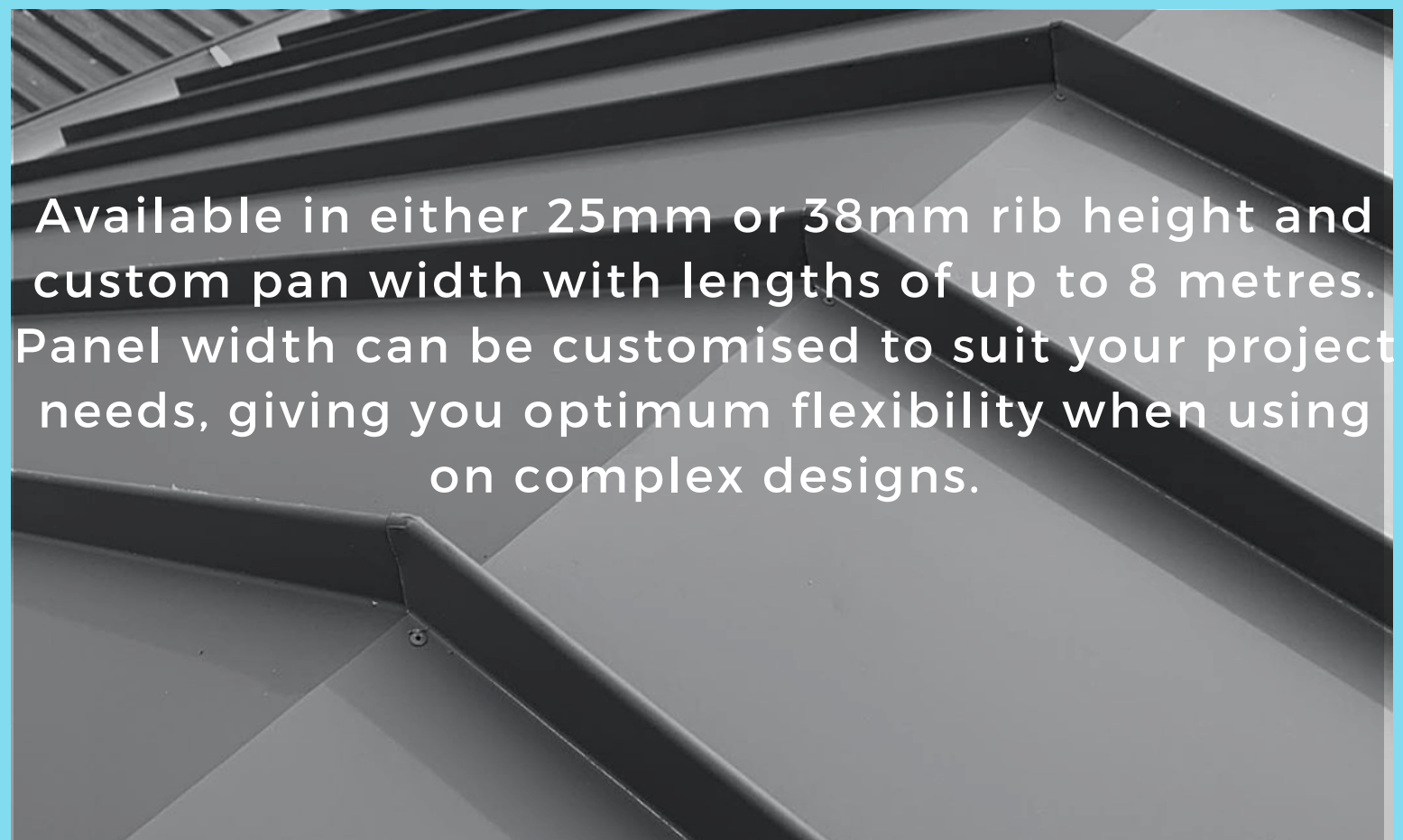
The Interlocking Panel system is different from the other profiles as it rises, creating a ventilated open area behind the panel. The panel width and express joints can be adjusted as required. The flexibility of this system is hard to beat and has a superior facade look



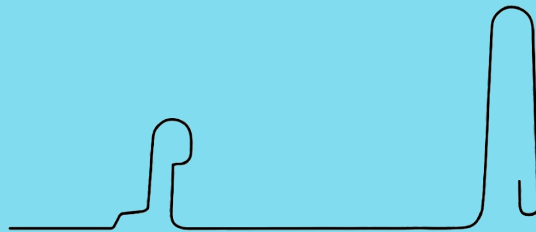
# NAIL STRIP



Perfect for residential and commercial applications, Nail Strip cladding system is a concealed fix profile ideal for all modern and traditional architectural facades.



## Profile

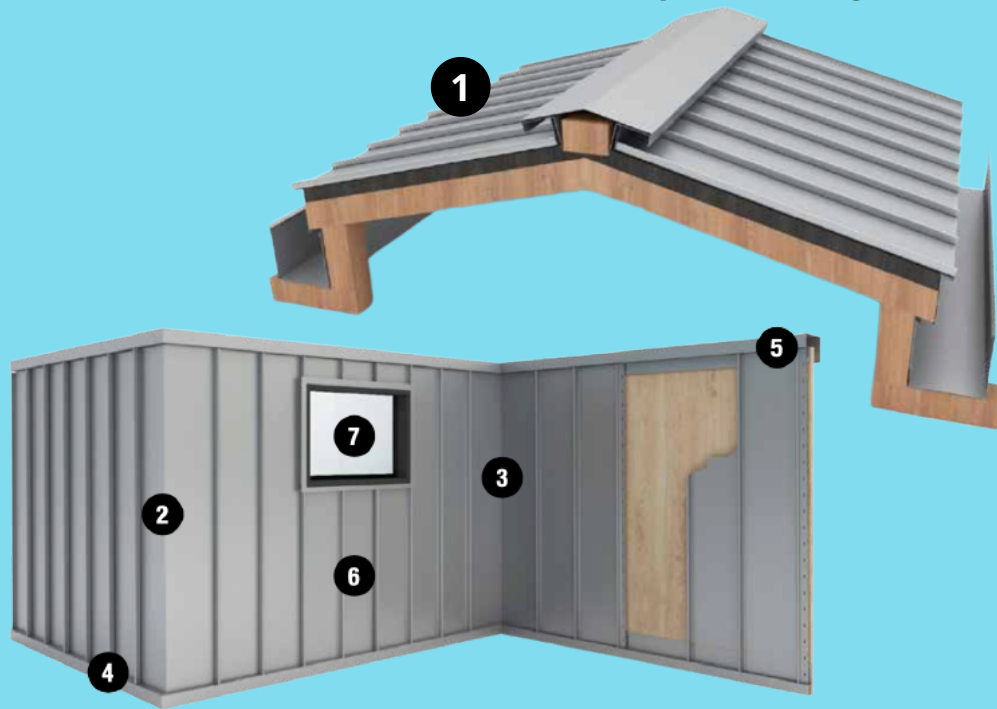


Rib Height	25mm or 38mm
Maximum Length	500mm - 8000mm
Pan Width 25mm	180mm - 490mm
Pan Width 38mm	180mm - 470mm

# NAIL STRIP



Nail Strip cladding system allows the flexibility to custom design panels to suit the required application for a superior finish. This includes panel designs to satisfy internal and external corners, windows, doors, or unique designs to your specification

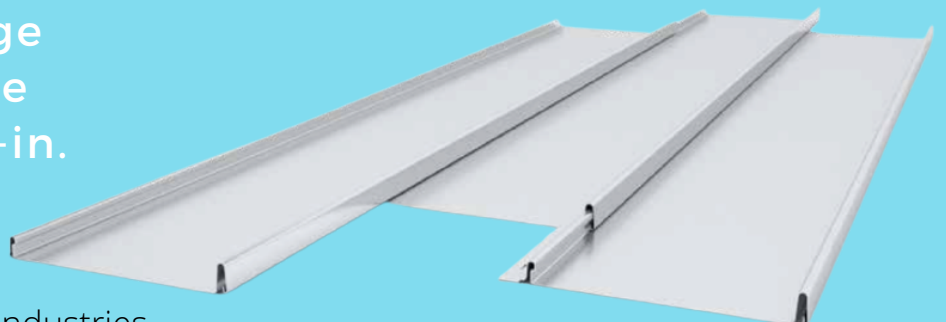


- 1** Ridge Capping
- 2** External Corner
- 3** Internal Corner
- 4** Foot Mould Flashing
- 5** Header Flashing
- 6** Starter Panel
- 7** Window Flashing

## INSTALLATION PROCESS

Panels can be installed horizontally, vertically, or diagonally to create a contemporary and dynamic aesthetic.

Screws are fixed along the perforated male edge prior to female edge clipping over to lock-in.





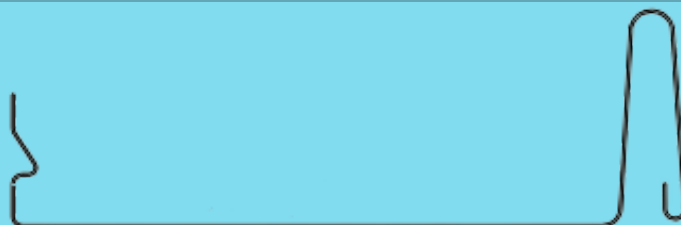
# SNAP LOCK



Snaplock is a modern alternative to the traditional standing seam. This system reduces installation time and associated costs thanks to a quick and cost-effective installation process.

Snap Lock comprises a wide recessed pan with a raised seam of either 25mm or 38mm in height. The overall effect of Snap Lock cladding is a series continuous flowing thick bands neatly framed by thin ribs that lends to a range of effects through a combination of light, shadows, the material used and finish to produce a dynamic visual impact

Profile

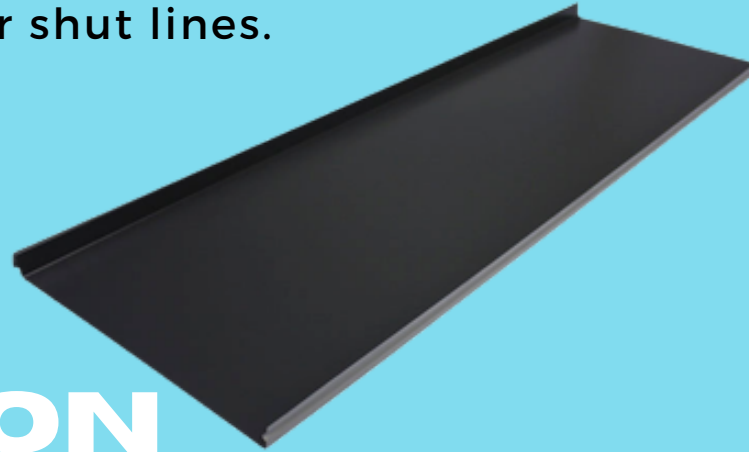


Rib Height	25mm or 38mm
Maximum Length	1000mm - 6000mm
Pan Width 25mm	320mm - 520mm
Pan Width 38mm	285mm - 485mm

# SNAP LOCK



Snap Lock panel pan width can be increased or decreased to suit between windows and door ways so that the ribs finish neatly along frames or shut lines.



## INSTALLATION PROCESS

Snap Lock cladding system is similar in appearance to the Standing Seam profile but differs in that the panels snap into each other to form a locking joint rather than requiring crimping.

The profile incorporates a male and female rib which work together snap locking into each other to create a strong sealed joint which is ideal for buildings exposed to severe weather such as strong winds, heavy rain, coastal spray and snowfall.





# FREQUENTLY ASKED QUESTIONS



**What is the difference between Standing Seam, Interlocking Panel, Nail Strip and Snap Lock?**

The main difference between the cladding profiles is the installation. Another difference is the look. The Interlocking Panel system has a different look to the other profiles as it rises, creating a ventilated open area behind the panel. Standing Seam, Nail Strip and Snap Lock have a similar aesthetic and are flat pan designs with different variations of raised ribs and fixing methods.

**Does Stormtech Cladding supply and install?**

We source our materials from trusted suppliers, such as Colorspan, and our team are fully certified to install all Cladding materials.

**Are cladding materials fire resistant?**

All cladding materials have been fire tested by our suppliers and comply with The Australian Standard codes of practice.

**Does Stormtech provide a warranty?**

All materials used come with a supplier warranty. In addition, Stormtech provides an additional 10 year warranty for works completed.

**WWW.STORMTECH.MELBOURNE**